



Source: www.die-vierte-wache.eu/EN/1-share-earnings-of-the-watchtower.html
01-20-2020

Share Gains for the Watchtower – What's New?

About 4 years ago, when the source of some stock gains for the Watchtower Society became known, the outrage among loyal Jehovah's Witnesses was great.

What has happened since then?



Was the diversification of share investments in 2014/15 an isolated case? Unfortunately not:

- In the year *before* and *after* the year shown below, the share diversification was almost identical: 4 resp. 5 blocks of shares in the **armaments industry**, 2 blocks of shares in the **entertainment industry**, **Monsanto shares**.
- From 2006/07 to 2008/09, the portfolio already included stocks in the **armaments industry**.
- In 2001/02, 2002/03, and 2009/10, the stock package included shares in **cigarette maker Philip Morris** (whose founder is related to a member of the Governing Body).
- In 2018/19, two share packages of the **armaments industry** were on board again.

Conclusion: Sadly, the Watchtower *continues* to accept share earnings from the **armaments industry as well as from **questionable entertainment companies**.**

Here is the original article, with updated links to public US servers:
(see next page)



Share Gains for the Watchtower

Regarding the finances of the Watch Tower Bible and Tract Society (WTBTS), the call for greater transparency is getting louder. The desire of many sincere proclaimers has become a demand, which we consider justified.

Therefore, on this page we will show you the path to facts publicly accessible to everyone, and make some considerations in the form of questions. The rating is left up to each reader himself.

Where there is clarity and openness, there is no room for speculations and question marks.

Every nonprofit organization is obliged to submit a kind of tax return each year. This declaration on the form 990 is published on the internet.

The Watch Tower Bible And Tract Society appears as a *beneficiary* in the tax return of the **Henrietta M. Riley Trust**.

Let's take a look at part of the WTBTS income. **Don't worry, it's not illegal!** These documents are available for inspection on public servers. Here you can find the tax returns of the Henrietta M. Riley Trust:

The screenshot shows the ProPublica Nonprofit Explorer interface. At the top, there is a navigation bar with the ProPublica logo, social media icons for Facebook and Twitter, and buttons for 'SIGN UP' and 'DONATE'. Below the navigation bar, the page is titled 'Nonprofit Explorer' with the subtitle 'Research Tax-Exempt Organizations'. The main content area features the name 'HENRIETTA M RILEY TRUST' in large, bold, black letters, followed by the EIN '33B006006 FBO'. Below this, there is a link to 'WATCH TOWER BIBLE' and the address 'PO BOX 75000, DETROIT, MI 48275-7874 | TAX-EXEMPT SINCE DEC. 1970'.

<https://projects.propublica.org/nonprofits/organizations/386043103>

What do these dry forms mean?

As an example, let's take a look at the **2014/15 tax year**.

Here is the direct link:

[Form 990 for tax year 2014/15 \(PDF\)](#)





The „Henrietta M. Riley Trust“

efile GRAPHIC print - DO NOT PROCESS | As Filed Data - | DLN: 93491251001105

Form **990-PF** | Return of Private Foundation or Section 4947(a)(1) Trust Treated as Private Foundation | OMB No 1545-0052

Department of the Treasury | Internal Revenue Service | **2014** | Open to Public Inspection

For calendar year 2014, or tax year beginning 05-01-2014, and ending 04-30-2015

Name of foundation RILEY HENRIETTA TRUSTEE UW	A Employer identification number 38-6043103
Number and street (or P O box number if mail is not delivered to street address) Room/suite PO BOX 75000	B Telephone number (see instructions)
City or town, state or province, country, and ZIP or foreign postal code DETROIT, MI 482757874	C If exemption application is pending, check here <input type="checkbox"/>
G Check all that apply <input type="checkbox"/> Initial return <input type="checkbox"/> Final return <input type="checkbox"/> Address change	<input checked="" type="checkbox"/> Initial return of a former public charity <input type="checkbox"/> Amended return <input type="checkbox"/> Name change
	D 1. Foreign organizations, check here <input type="checkbox"/> 2. Foreign organizations meeting the 85% test, check here and attach computation <input type="checkbox"/>

Who was Henrietta M. Riley?

Ms Henrietta M. Riley, a member of a rather wealthy family, was supposedly a Jehovah’s Witness, or at least sympathized with them. Before she passed away in 1945, she donated a capital to support the Watch Tower Society.



Founded in 1970, the **HMR Trust**’s sole purpose is to generate equity returns that, after deduction of costs and taxes, **flow 100% to the WTBS**. The trust is being managed and supervised by employees of the Comerica Bank in Detroit.

Page 11 of this form shows that the „Henrietta M. Riley Trust“ works for the benefit and general support of WTBS. We also see that the HMR Trust generated a **net income of US\$ 696,897.00 for the Watchtower Society** this year:

Form 990-PF (2014) | Page 11

Part XV Supplementary Information (continued)

3 Grants and Contributions Paid During the Year or Approved for Future Payment

Recipient Name and address (home or business)	If recipient is an individual, show any relationship to any foundation manager or substantial contributor	Foundation status of recipient	Purpose of grant or contribution	Amount
WATCH TOWER BIBLE & TRACT SOC 25 COLUMBIA HTS BROOKLYN, NY 11201	NONE	EXEMPT	GENERAL SUPPORT	696,897



So are these „Watchtower Shares“? No, the pot of money is „owned by itself“, so to speak. The capital is being lent to companies to work with, and they return a part of their earnings to the pot, and **these gains are** given to and **accepted by the WTBTS**.

To make a long story short:

This pot of money is not owned by the WTBTS.
Thus, they do not invest into these companies **themselves**.
But they are ethically linked because they continuously accept these share gains.

Neither does it consist of **our** donations. It's the donations of deceased Ms Riley.

Where do the Stock Gains come from?

The thrilling thing starts at page 25:

In which branches are shares been placed?

From which companies' economic success did the Watch Tower Society have their benefit?

Name of Stock	End of Year Book Value	End of Year Fair Market Value
MCKESSON CORP	6,879	6,702
MERCK & CO INC	10,736	13,699
REGENERON PHARMACEUTICALS INC	2,005	2,287
THERMO FISHER SCIENTIFIC	4,833	5,027
UNIVERSAL HEALTH SVCS INC	3,222	3,509
BOEING CO	6,326	7,167
GENERAL DYNAMICS	4,086	4,120
HONEYWELL INTL INC	8,333	9,083
LOCKHEED MARTIN	4,825	5,598
NORTHROP GRUMMAN	3,337	4,621
ROPER INDS INC	1,635	4,204
UNITED TECHNOLOGIES	9,829	10,238
WABTEC CORP	1,850	2,822
APPLE INC	8,003	21,901
CISCO SYS INC	5,161	5,478
FACEBOOK INC	4,430	7,089
FISERV INC	1,770	3,880
GOOGLE INC CL C	8,885	8,597
YAHOO	3,999	3,831
ALCOA INC	2,438	2,013
AVERY DENNISON CORP	4,950	5,559
DOW CHEMICAL	4,369	4,590
MONSANTO CO	5,647	5,698
SEALED AIR CORP	3,797	5,472
LIONS GATE ENTERTAINMENT CORP	5,227	5,272
MEDTRONIC PLC	9,234	8,934



The Stock Portfolio 2014/15

The equity portfolio includes approx. 70 companies. Here are a some of them in alphabetical order (each of the product images taken from the company's own website):

BOEING

Sector: a.o. Armaments industry
e.g. combat aircrafts, helicopters, missiles
End of Year Book Value:
\$ 6,326



HONEYWELL

Sector: a.o. Armaments industry
e.g. military technology
\$ 8,333



LOCKHEED MARTIN

Sector: Armaments industry
e.g. combat aircrafts
\$ 4,825





LIONS GATE ENTERTAINMENT CORP.

Sector: Entertainment industry

e.g. Horror movie series „SAW I-VII“

\$ 5,227



MONSANTO COMPANY

Sector: Agrochemicals, biotechnology

very aggressive lobbying, environmental scandals

\$ 5,647



NORTHROP GRUMMAN CORP.

Sector: Armaments industry

e.g. Stealth bomber B-2 Spirit, Combat aircraft F-14, Surveillance drone RQ-4A Global Hawk

\$ 3,337



TIME WARNER INCORP.

Sector: Entertainment industry

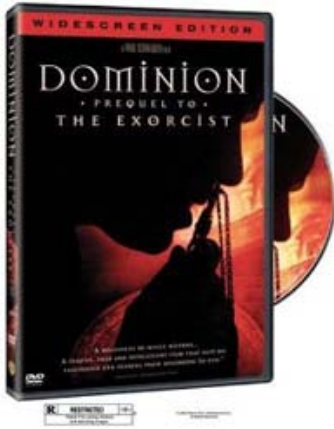
e.g. Soft porno, war and mystery movies (subsidiary Cinemax)

\$ 4,955





TIMER WARNER (continued)



And what about the spiritual and moral dimensions of these economic matters?

Any Jehovah's Witness who learns to kill as a professional soldier will be disfellowshipped

Any „rank and file JW“ who earns his living in the Armaments industry will be shunned if he doesn't cancel his job immediately – at the consequence of losing his family's income.

Anyone who smokes cigarettes is also kicked out – and so is anyone who earns a living in a tobacco shop.

And what about the leadership of Jehovah's Witnesses?

Should we not apply the same Christian principles here?





If so, there are two ways to chose between:

A) **Reject the stock gains** of the HMR Trust in total or

B) **Reject the specific amounts** generated in questionable branches.

Did you like this article? And do you speak a foreign language well? We are urgently looking for someone who can translate this article (e.g. in French, Russian, Italian ...)
We would be VERY grateful for your help!

Contact us: 4wache@gmail.com